

TIER 3 EPA Certified

The EPA-certified engine is installed, tested and integrated with the entire vehicle. PRINOTH's commitment to exceptional quality results in a vehicle that meets EPA Tier 3 standards.



The SW 4S's microcontroller brings it all together. Fully compatible with the engine's J1939 communication protocol, it understands the language of the engine, operator and machine to achieve maximum performance and safer working conditions.

SPECIFICATIONS

DIMENSIONS

Overall length		
basic vehicle	3 175 mm	125 in
w/HD straight blade	4 039 mm	159 in
w/V-plow	4 648 mm	183 in
w/HD snowblower	4 217 mm	166 in
w/HD snowblower & sandspreader	4 745 mm	187 in
w/HD straight blade & sandspreader	4 674 mm	184 in
Overall width		
track mode	1 285 mm	50.5 in
wheel mode w/turf tires	1 700 mm	67 in
wheel mode w/side walk tires	1 346 mm	53 in
Overall height		
track mode	2 337 mm	92 in
wheel mode	2 375 mm	93 in
Ground clearance	249 mm	9.8 in

PERFORMANCE

Maximum speed	30 km/h	19 mph
Turning radius		
track mode	0 m	0 in
wheel mode	1.22 m	4 ft

Weight

w/tracks	3 080 kg	6 790 lb
w/tracks & HD straight blade	3 284 kg	7 240 lb
w/tracks & HD snowblower	3 733 kg	8 230 lb
w/tires	2 810 kg	6 200 lb

ENGINE

Make	Caterpillar	
Model	C4.4	
Type Turbo	Turbo diesel, electronic fuel system, EPA Tier 3	
Number of cylinders	4	
Displacement	4.4 L	269 in ³
Power @ 2200 rpm	74 kW	99 hp
Torque @ 1400 rpm	420 N•m	310 ft•lb
Engine block heater	750 W	
Glow plug starting aid	Yes	

POWER TRAIN

Make	Sauer-Danfoss Series 90	
Hydrostatic pumps	Parker	
Hydrostatic motors	Parker	

CONTROL

Type	Microcontroller with color display	
Characteristics	Steering wheel, progressive F-N-R lever. Speed pedal. Anti-stall and auto-calibration.	

ELECTRICAL

Voltage	12	
Alternator	85	
Battery	950 CCA	

SUSPENSION

Front	Adjustable air bellows with hydraulic damper	
Rear	Tandem	

TRACKS

Type	Endless rubber track reinforced with steel wire	
Width	350 mm	13.8 in
Tensioner	Grease actuated cylinder	

CHASSIS

Type	Toboggan welded with access panels. Ready for wheel kit installation.	
-------------	---	--

CAPACITIES

Cooling system	12 L	3.1 U.S. gal
Fuel tank	120 L	32 U.S. gal
Engine crankcase	7 L	1.8 U.S. gal
Hydrostatic tank	19 L	5 U.S. gal
Hydraulic tank	22 L	5.8 U.S. gal

HYDRAULICS

Rear (standard)	Hydraulic system for salt and sand spreader Variable flow max 11.7 l/min (3 GPM)	
Front (optional)	High flow front hydraulics setting is 25 GPM @ 3000 PSI (Max. setting 33 GPM @ 6000 PSI upon special request)	

QUICK-MOUNT ATTACHMENT SYSTEM (OPTIONAL)

Quick-mount attachment system SAE "skid steer" with tilt cylinder

CAB

One-person insulated cab with integrated roll over protective structure (R.O.P.S. ISO 3471) certification	Signal light system
Electric power tilt	Rear windshield defroster
3- point seat belt	Cab noise insulation
Adjustable suspension seat	1 rear halogen light
Heater-defroster with adjustable temperature, fan control and fresh air intake	Brakes and parking lights
Front windshield wiper with washer with intermittent switch	Beacon light with protective guard
Rear windshield wiper	Electric joystick for front implement control
Dome lamp and dash light	Radio AM/FM-CD stereo with speakers
2 front halogen lights with flashers	Cab access step

OTHER EQUIPMENT (STANDARD)

Horn, emergency/parking brake with automatic application upon door opening, back-up alarm, parts, service & operator's manuals

MICROCONTROLLER DISPLAYS

Gauges & Indicators

Hour meter	High engine temperature
Fuel level	Engine oil low pressure
Tachometer	High hydrostatic temperature
Hydrostatic oil temperature	Hydrostatic low oil level
Neutral indicator	Parking brake indicator
Engine oil pressure	Low fuel level
Engine coolant temperature	Engine and transmission fault
Voltmeter	
Winter or summer switch	

Warnings lights and buzzers

Parking brake indicator
Transmission neutral position
Engine warning light
Engine "wait to start" light
Engine stop light
Low battery voltage

AIR CONDITIONING (OPTIONAL)

Roof mounted with adjustable temperature, fan control and fresh air intake
22 000 BTU

SW 4S



PRINTED IN CANADA 188421406

© 2010 PRINOTH Ltd. All rights reserved. ® and TM are trademarks of PRINOTH Ltd. PRINOTH Ltd. reserves the right to change or discontinue any specifications, designs, features, models or accessories shown or indicated without notice.



To find a PRINOTH dealer:
www.prinoth.com



Reliability pays off.
Keep your vehicle reliable with certified OEM parts!

PRINOTH AG
Brennerstrasse 34
I-39049 Sterzing (BZ)
Tel. +39 0472 72 26 22
Fax +39 0472 72 26 18
prinoth@prinoth.com



PRINOTH Ltd.
1001 J.-A.-Bombardier Street
Granby, Quebec, Canada, J2J 1E9
Phone: 450.776.3600
Fax: 450.776.3625
utilityvehicles@prinoth.com



ANY JOB, ANY SEASON VERSATILITY

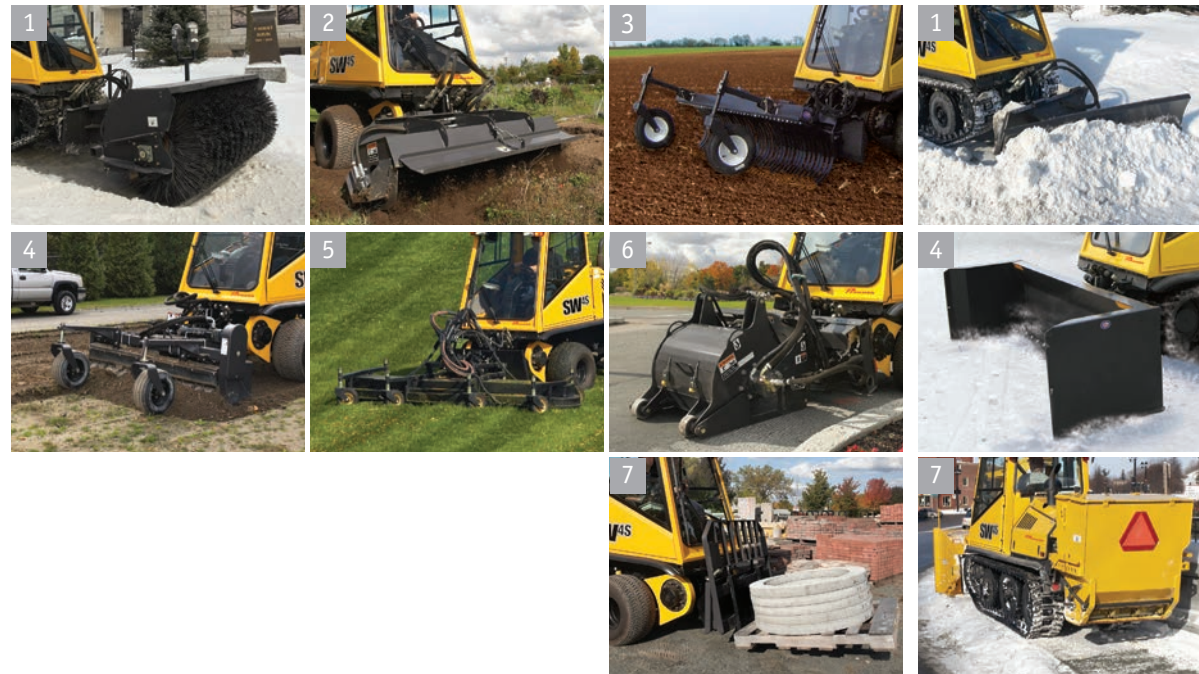
A year-round working machine that converts from tracks to wheels as needed.

- A microcontroller combined with a full color display manages the Tier 3 Caterpillar turbo-diesel engine and the vehicle's hydrostatic transmission to ensure maximum performance.
- The ergonomically designed and insulated cab complies with R.O.P.S. standards and provides a superior working environment for the operator.
- Optional air conditioning offers even greater comfort.
- And improved access allows easier vehicle maintenance.

SUPERIOR WINTER PERFORMANCE WITH FOUR SEASON VERSATILITY! IT'S THE SW® 4S.

ATTACHMENTS FOR OTHER SEASONS

- 1 Angle broom
- 2 Tiller
- 3 Grader rake
- 4 Power rake
- 5 Articulated mower
- 6 Cold planer
- 7 Pallet fork



WINTER ATTACHMENTS

- 1 Heavy-duty snow blade
- 2 Heavy-duty snow blower
- 3 V-plow
- 4 Snow pusher
- 5 Snow blades (several widths available)
- 6 Single auger snow blowers
- 7 Salt and sand spreaders (rear mount)

A quick-attach system allows the SW 4S to be equipped with a wide variety of standard skid-steer implements to handle almost any task in any season.

AND MORE TO COME!

Get the superior performance of PRINOTH equipment in winter but never store the vehicle because there's no summer vacation for the SW 4S! It earns its keep all year long.

AS EASY AS 1-2-3!

ONLY 3 EASY STEPS:



Remove tracks, drive sprockets and wheels.



Remove rear suspensions, adjust front suspensions and install sprockets.



Install drive chains and front wheels. Bolt on the rear wheel assembly. Connect the hydraulics and run the auto-calibration function.

NOW ENJOY YOUR SUMMER!