



## LeitControl

Easy, intuitive, central

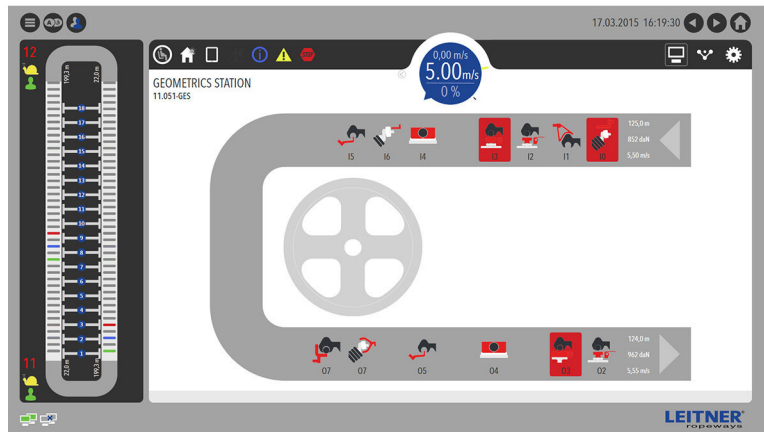
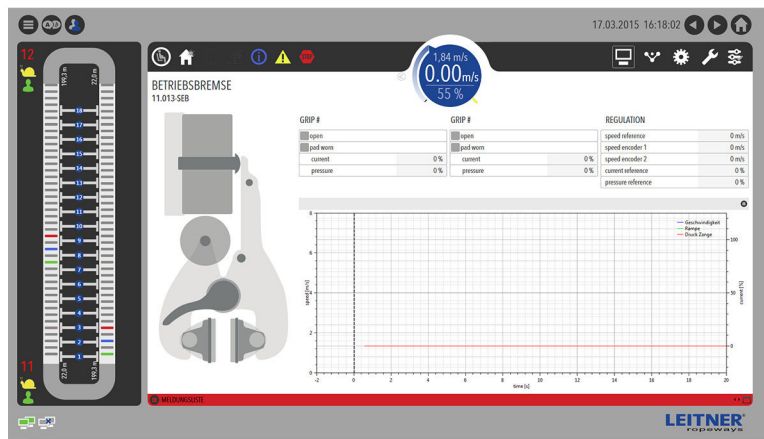
**Basis** LeitControl is a completely novel, touch-control-based operational concept for ropeways. Thanks to its easy, central and highly intuitive control system, this LEITNER innovation offers ropeway operators new levels of ease of use.

**Description** The basic idea for the development of LeitControl was the conversion of the system from a hardware-oriented to an application/function-oriented operational concept. The newly developed operator panel features all control keys needed for day-to-day operation.

With a conventional control system, up to 7 individual, manual operational steps have to be taken, for example, in order to garage the vehicles – from the correct positioning of the system and the adjustment of the switch points to the start of the conveyor chains. With LeitControl, the operator simply needs to activate the GARAGING function, and the rest of the process is carried out fully automatically without any further operator action.

This operational concept runs through the entire operation of the system, both during normal operation and during trials and tests (e.g. brake tests) that are necessary for commissioning and/or regular inspections.

Moreover, LeitControl allows monitoring all ropeways within a skiing region centrally from a single screen.



**Benefits** All operating elements needed for the system's **day-to-day operation** are aligned at the operator panel, with a **clear view of the passenger area**.

**Fully automated take-over** of all functional processes which previously had to be controlled manually (e.g. vehicle parking procedure, brake tests).

**Utmost ease of use** for operators through an **easy, clearly arranged operator panel** and **intuitive touch-screen operation** via **multi-screen** or **tablet**.

**Significant reduction** of **training periods** for new employees and **avoidance of operator errors** and related downtimes **during day-to-day operation** thanks to a **function-oriented control concept**.

Integrated **help function** with linking to wiring schemes and the user manual.

Optional integration of **automated announcements** and display of the visualization in **various, quickly changeable languages**.